

A photograph of three people standing in a field of tall grass and wildflowers. In the background, there is a dense line of trees with vibrant autumn foliage in shades of yellow, orange, and red. The sky is blue with scattered white clouds. On the left, a man in a blue safety jumpsuit with reflective yellow stripes, a grey cap, and glasses stands looking towards the right. In the center, a woman with dark hair, wearing a black jacket and dark pants, looks up at the man on the right. On the right, a man wearing a grey jacket, blue jeans, and a flat cap stands with his hands clasped, looking towards the woman. The overall scene is bright and natural.

# Pipeline Safety Information

for landowners, farmers and our neighbours

---

Please keep for future reference.



You have received this brochure because you live, work, or own property near a pipeline owned or operated by Pembina Pipeline Corporation or one of our subsidiaries (Pembina).

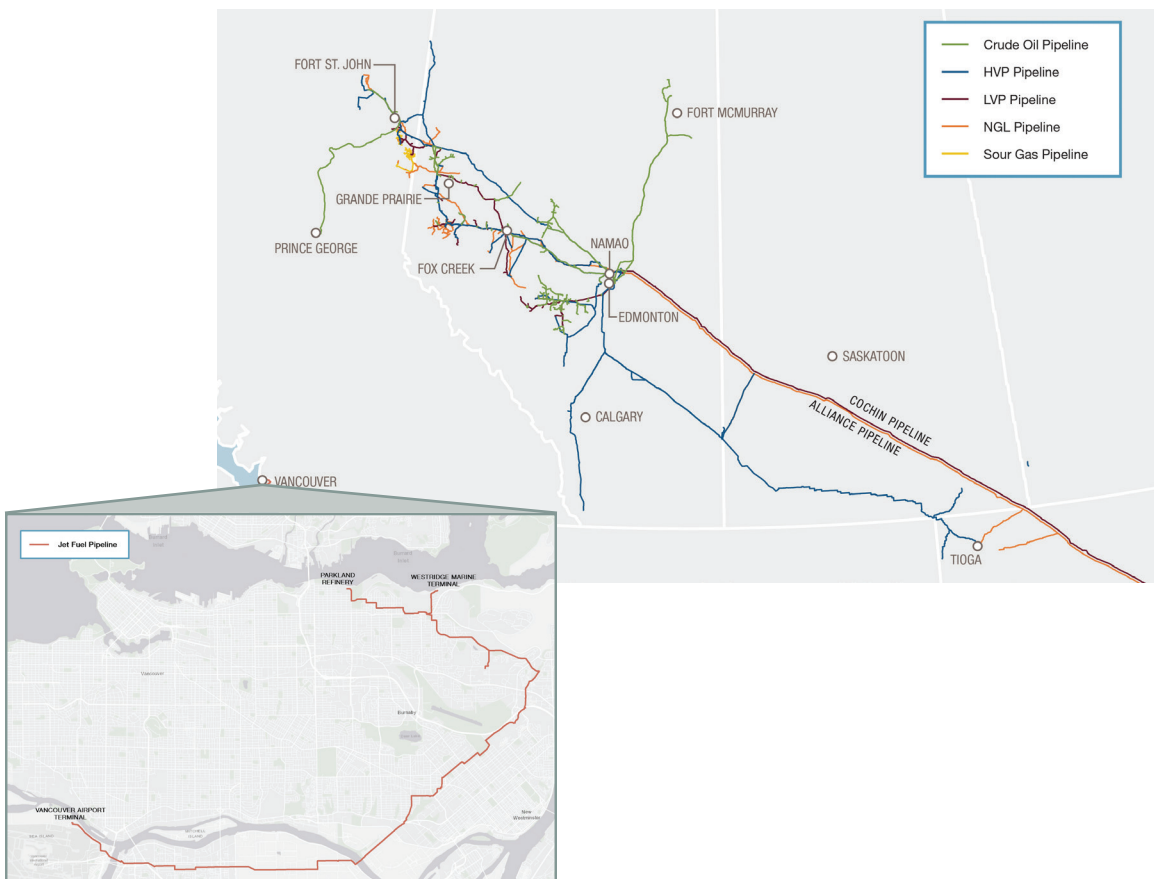
As part of our Public Awareness program, we are committed to informing and educating you about the presence of pipelines in your community and how to work safely around them.

Read on to find out about Pembina's operations, safety practices, and how you can help prevent damage to underground infrastructure in your area. We all play an important role in pipeline safety.

## Who is Pembina?

We are a leading North American transportation and midstream service provider. For more than 65 years, we have been safely and reliably connecting oil, natural gas, and natural gas liquids production to markets that need it. Pembina owns an integrated system of pipelines that transport various hydrocarbon liquids and natural gas products. We also own gas gathering and processing facilities, and an oil and natural gas liquids infrastructure and logistics business.

## Our pipelines





## About pipelines

Pipelines are a safe and efficient means of transporting large quantities of crude oil, natural gas and natural gas liquids. Pembina's pipelines and facilities are designed, constructed, and operated in a safe and environmentally responsible manner.

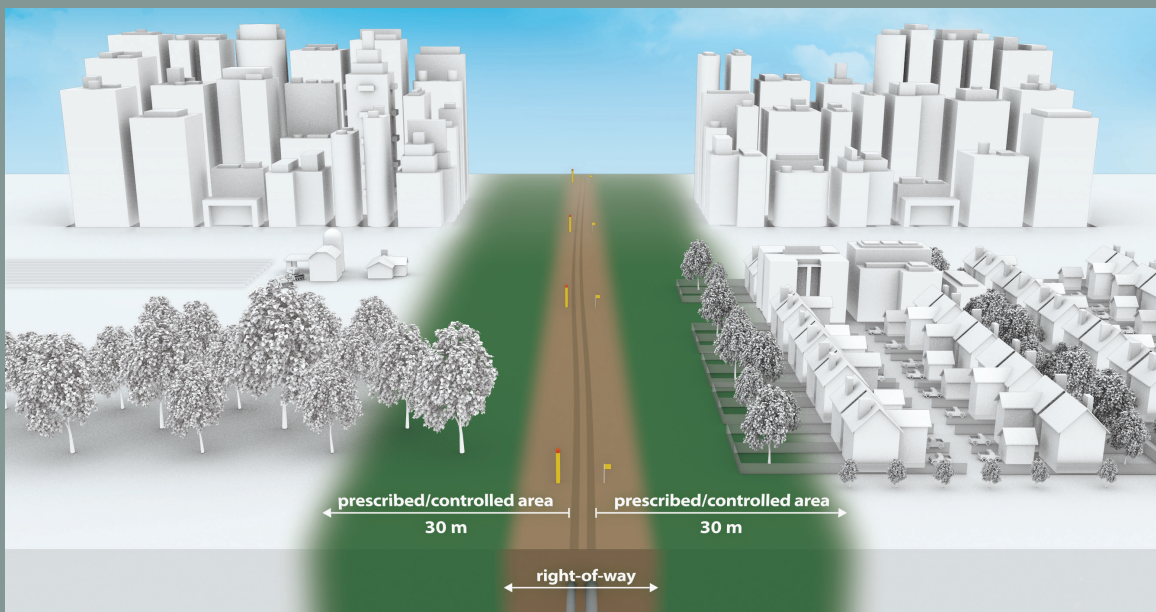
Communities put trust in Pembina and allow us to operate in your backyards.

We know that maintaining the integrity of our pipelines is

essential to the health and safety of the communities in which we operate.

We conduct regular inspections, maintenance, and testing to confirm that our pipelines operate safely. We monitor the operating conditions of the pipeline through sensors 24/7/365 from our state-of-the-art control room, as well as conduct aerial and ground inspections to ensure our systems are operating safely.

## Right-of-Way



A pipeline right-of-way (ROW) is the strip of land where the pipeline is located. The width of the ROW may vary depending on factors such as pipeline diameter or the number of pipelines in an area. The area extending 30 meters (100 feet) on either side of the pipeline is called the Prescribed Area / Controlled Area.

ROW corridors are often recognizable because they are clear of trees, buildings and other structures. The ROW enables Pembina employees and contractors to access the pipeline for operations, inspections, maintenance, testing, and in the rare event of an emergency.

Pipeline marker signs show the approximate location of the pipeline. Only a Pembina representative can identify the exact location of the pipe.

Regulations restrict certain activities near the ROW that could pose a threat to public safety and the safe operation of the pipeline.

These activities may need written consent from Pembina. Contact us if you're unsure if your activity requires consent.

# How to prevent damage to Pembina's pipelines

Some of the biggest threats to pipeline safety come from activities happening every day in your community. Unauthorized construction, development, encroachment and digging activities can cause serious damage to pipelines and put those near them at risk. Notifying Pembina and your local One-Call Centre are your first steps to preventing damage to underground infrastructure and working safely around pipelines.

Written consent from Pembina must be received before any of the following activities can occur:

- Construction of a facility across, on, along, or under a pipeline (including the ROW)
- Ground disturbance activities in the Prescribed Area / Controlled Area, 30 meters (100 feet) on either side of the pipeline
- Operation of a vehicle or mobile equipment across a ROW, outside the travelled portion of a highway or public road
- Any activity that the company deems may negatively impact the safety of the pipeline

## What is a ground disturbance activity?

- Any activity that results in a disturbance of the earth to a depth greater than 30 centimetres (12 inches)
- Any activity that reduces the earth cover over any pipeline to less than the cover provided when the pipeline was installed
- Cultivation activity to a depth greater than 45 centimetres (18 inches) below the surface of the ground

## Common ground disturbance activities on residential and commercial properties include, but are not limited to:

- Ground leveling
- Installing drainage tiles or a drainage system
- Tree planting
- Fence post installation
- Augering



# How to obtain a Crossing Agreement

A Crossing Agreement is written consent from Pembina stating you may proceed with your planned activity. This Agreement informs us of your activity and allows us to provide assistance to prevent incidents or damage to our pipelines.

## Steps to obtain written approval from Pembina

1. Email [landrequests@pembina.com](mailto:landrequests@pembina.com) with your name, legal land description, and a description of the work you would like to do.
2. Pembina will contact you and walk you through how to submit a request for permission to proceed with your activity in, along or adjacent to the ROW.
3. Pembina will review your complete request once your information has been received. Pembina may:
  - Grant consent with standard conditions; or
  - Grant consent that requires specific conditions be met to ensure safety; or
  - Work with you to find solutions and resolve issues regarding the consent request; or
  - Deny consent in the rare situation that a feasible safety solution cannot be found.

## 4. Once consent has been granted, you must:

- Make a locate request to your local One-Call Centre at least three business days before beginning the work. Pembina will arrange for a Company representative to be on site to inspect the area at time of crossing.
- Always keep the written consent and documentation onsite.
- Follow all terms and conditions laid out in the consent, and all instructions from Pembina personnel onsite.



Before starting any ground disturbance near the ROW, you or your contractor must notify the local One-Call Notification Centre. A Pembina representative will locate and mark the location of the pipeline and contact you to discuss your planned activities.

You can access your provincial One-Call Centre to place a locate request to make a locate request anywhere in Canada at: [clickbeforeyoudig.com](http://clickbeforeyoudig.com).

# Preventing damage to pipelines during Agricultural Activities

Farmers and ranchers play an important role in protecting pipelines from damage and must contact the local One-Call center before conducting any soil disturbing activities that are not considered an Agricultural Activity.

## What is an Agriculture Activity?

Agricultural Activity is defined as the production of crops and the raising of animals, and includes tillage, plowing, disking, harrowing and pasturing. The following table provides a general description of common Agricultural and Non-Agricultural Activities;

Agriculture Activity	Non Agriculture Activity*
Tilling / Fallowing	Land Leveling
Harrowing	Contouring
Seeding	Drainage Tiling
Harvesting	Drainage Ditching (Install / Cleaning)
Haying	Fence Installation
Herbicide Application	Corral Installation, including shelters
Livestock Feeding	Dugout Installation
Fertilizer Application	Installation of animal shelters
Mowing	Test Pit
Spreading of Manure	Any Removal of Cover – includes manure
	Construction of any new buildings
	Sod farming, Bulk transportation of goods
	Tree planting / Removal

\* Must be preceded by a One-Call or locate request. Pembina will need to provide written consent to landowners for non-agricultural activities.

Agriculture Activities are permitted on or near a pipeline ROW if:

- The loaded axle weight, ground pressure and tire pressure of the vehicle or mobile equipment are within the manufacturer's approved limits and operating guidelines.
- The point of crossing has NOT been the subject of a notification from Pembina stating that a crossing

at that location could impair the pipeline's safety or security.

- The depth of cultivation is less than 45 cm (18 inches).

Written consent from Pembina and a One-Call Notification are required for all Non-Agricultural Activities and Agricultural Activities (that fail to meet one or more of the above guidelines) within or across the ROW and within Prescribed / Controlled Areas. All Non-Agricultural activities require a One-Call placement.

Note that heavy rains, floods, and droughts can affect the soil above buried pipelines. If you spot soil erosion or displaced soil along a ROW, please contact Pembina immediately.

## Vehicles and mobile equipment

Unless defined as an Agricultural Activity, crossing the pipeline with a vehicle or mobile equipment (outside of a travelled portion of a highway or public road) must have Pembina's written consent to do so. Pembina will determine if the vehicle is safe to cross our pipelines.

Once we've evaluated the request and confirmed whether or not the vehicle may cross safely, we will provide the necessary written consent or work with you on modifications as required.

If landowners are unsure if their Agricultural Activity meets the definition, or if the Agricultural Activity could jeopardize the safe and secure operation of the pipeline, please contact Pembina before crossing or performing any ground disturbance work.

## Drainage improvements

If you are planning to improve drainage across or within the ROW, you must consult with us first.

Excavation greater than 30 cm in depth within the Prescribed / Controlled Area require consent from Pembina. Consulting with us as early as possible regarding your drainage proposal, including installing drain tiles, ditching, grading or deep tilling, will allow us to assess your work and set safe work procedures when working within the pipeline ROW.

For installations across the ROW, written consent is required.

# You are our partner in safety

## Know the warning signs

Although a pipeline release is rare, it is important to know the warning signs:



### You might see:

- a pool of black liquid or oily sheen on a water surface
- dead or dying vegetation in an otherwise green area
- dirt being blown or appearing to be thrown into the air
- a white vapor stream or mist-like cloud over the pipeline
- unexpected frost or ice on the ground
- discoloured snow or vegetation



### You might hear:

- an unusual hissing, blowing, or roaring noise



### You might smell:

- a petroleum or hydrocarbon smell

## If you suspect a release

In the unlikely event of an emergency, Pembina will immediately shut down the pipeline (if necessary) and activate our Emergency Response plan.

### If you recognize any of the warning signs:

- abandon any mechanized equipment and move as far away from the leak as possible, avoiding contact with escaping liquids and gases
- call 9-1-1 first
- after you call 9-1-1, call Pembina's emergency line that you see on a pipeline marker
- follow instructions provided to you by Pembina and local emergency responders

### What you shouldn't do

- do not touch or go near any liquid, gas or vapor cloud
- do not start your vehicle or any equipment that could be a potential ignition source
- do not smoke or light a match, and avoid heating sources or making sparks
- do not turn on or off anything that may create a spark, including cell phones, pagers, flashlights, keyless entry remotes, vehicle alarms, and light switches, until you are in a safe location
- do not attempt to operate or turn pipeline valves
- do not attempt to extinguish any flames or fires

## What to do if you strike a pipeline

Whether it appears there is damage or not, follow these steps:

1. Stop all excavation and construction work and move away from the area on foot; let others know to do the same
2. Shut off all equipment and machinery
3. Call 9-1-1 first as soon as you are in a safe location
4. After you call 9-1-1, call Pembina's emergency number 1-800-360-4706 and explain the situation
5. Do NOT attempt to operate any valves
6. Do NOT begin work again until a Pembina representative authorized you to do so



## 24-hour Emergency Response Number: **1-800-360-4706**

If you notice any unusual or suspicious activity on or near the ROW, please report it by calling 9-1-1 first, followed by Pembina's 24-hour emergency number above.

## Click before you dig



**British Columbia One Call**

1-800-474-6886  
bc1c.ca



**Utility Safety Partners (Alberta)**

1-800-242-3447  
utilitypartners.ca



**Saskatchewan 1st Call**

1-866-828-4888  
sask1stcall.com



**Click Before You Dig Manitoba**

1-800-940-3447  
clickbeforeyoudigmb.com



**Ontario 1 Call**

1-800-400-2255  
ontarioonecall.ca

## How to contact us

Pembina strives to be a trusted member of the community. We're committed to open, two-way communication with our stakeholders. We welcome the opportunity to make a connection with you — please contact us in any of the following ways.

### Community Relations:

Phone Toll Free: **1-888-920-1979** (Non-emergency calls only)  
Email: [community@pembina.com](mailto:community@pembina.com)

[www.pembina.com/safetyaroundpipelines](http://www.pembina.com/safetyaroundpipelines)

Pembina's head office:

### Pembina Pipeline Corporation

4000, 585 - 8 Avenue S.W.  
Calgary, Alberta, Canada T2P 1G1

Phone: **403-231-7500**

Toll Free: **1-888-428-3222**