



# Wildfire Emergency Pipeline Crossings



---

This document is exclusively intended for wildfire management personnel  
and their authorized representatives



# Crossing methods

## Crossing timelines

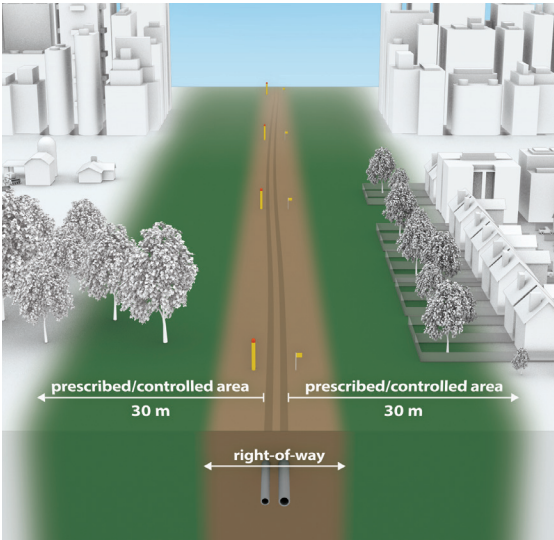
With 10+ days' notice	Send an email to <a href="mailto:landrequests@pembina.com">landrequests@pembina.com</a> , including your name, legal land description, and a detailed description of the work you plan to undertake.
Less than 10 days' notice	<div>Submit an "emergency locate" request through your local one-call notification center by visiting <a href="https://www.clickbeforeyoudig.com">ClickBeforeYouDig.com</a>.</div> <div> </div>
Emergency crossings	<div>In emergency situations, when advance notice is not feasible due to the urgency of the situation, implied permission is granted, provided Pembina is promptly notified via the Emergency Management On-Call Line and all Crossing Guidelines are followed. <b>Contact Pembina's 24-hour Emergency Response Number at 1-800-360-4706 (1-800-884-8811 for Alliance pipelines)</b> as soon as possible to advise of the wildfire response and crossing.</div> <div>Within 10 days after the emergency crossing, you must apply via email to <a href="mailto:landrequests@pembina.com">landrequests@pembina.com</a>. This allows Pembina to assess the pipeline crossing and provide specific instructions for the necessary site restoration.</div>

# Pipeline Awareness for Public Safety

## How do you know if a pipeline is nearby?

A pipeline right-of-way (ROW) is the strip of land where the pipeline is located. The width of the ROW may vary depending on factors such as pipeline diameter or the number of pipelines in an area. ROW corridors are often recognizable because they are clear of trees, buildings and other structures.

Regulations restrict certain activities near, or on, the ROW that could pose a threat to public safety and the safe operation of the pipeline. Certain activities, including vehicle/equipment crossings, may need written consent from Pembina. If you are unsure whether your activity requires consent, please contact us at [landrequests@pembina.com](mailto:landrequests@pembina.com).



## Pipeline markers

Pipeline markers are located along the pipeline right of way (ROW) to identify the general area of the pipeline. However, these markers do not identify the exact location or depth of the pipeline, and more than one pipeline can share the same ROW. The markers also specify the product being





transported, the operator's name and emergency contact number. Only a Pembina representative can identify the exact location of the pipeline.

- The pipeline's position may vary within the ROW.
- Pipe diameters can range from as small as one inch to as large as 42 inches.
- Operating pressures may vary between 3,000 and 25,000 kPa.
- The depth of cover is not consistent and can only be accurately determined with a Pembina representative present on-site.

## Crossing Methods

**After contacting Pembina's Emergency Management On-Call Line work with Pembina's representative to implement precautions.**

### Crossing options (in order of preference):

#### Temporary crossing with rig mats or timber mats

- Crossings should be kept to only a single mat wide.
- Soil on top of mat(s) may be required to prevent damage to mats; however, it should be kept to a minimum.

#### Temporary crossing with fill

- Geotextile should be used for ease of site clean-up.
- Fill must be a minimum of one meter high and must be maintained over the course of the crossings.

## Crossing guidelines

Please note: the following crossing guidelines apply to each crossing option above.

- DO NOT park any vehicle or equipment within the right of way and DO NOT stockpile materials within a right of way.
- Aim to maintain a crossing angle as close to 90° as possible, with a minimum of 70°.
- Ensure a minimum distance of 7.5 meters from any above-ground infrastructure and avoid crossing at intersections of two rights-of-way (ROWS).
- When crossing multiple pipelines, utilize a single continuous crossing unless the distance between

pipelines allows for the use of multiple crossing methods.

- Berms and/or flags are recommended on both sides of the traveled surface.
- Only one vehicle or piece of equipment should cross at a time.

**DO NOT perform digging activities or ground disturbance without Pembina Representative on site.**

## Post-Wildfire Rehabilitation of Crossing Sites

Once the emergency has passed, all protective measures used during the crossing must be removed. This is crucial to prevent unauthorized or uncontrolled access along, across or within Pembina's rights-of-way by third parties in the future.

Follow the terms and conditions outlined in Pembina's crossing agreement regarding site clean-up and restoration of the crossing area.

Furthermore, before starting any site clean-up activities, it is mandatory to request a locate through your local one-call notification center by visiting **ClickBeforeYouDig.com** to ensure safety throughout the entire restoration process.





24-hour Emergency Response Number:  
**1-800-360-4706**

Emergency number for Alliance (US & Canada): 1-800-884-8811

If you notice any unusual or suspicious activity on or near the ROW, please report it by calling 9-1-1 first, followed by Pembina's 24-hour emergency number above.

## How to contact us

Pembina strives to be a trusted member of the community. We're committed to open, two-way communication with our stakeholders. We welcome the opportunity to make a connection with you — please contact us in any of the following ways.

### Community Relations:

Phone Toll Free: **1-888-920-1979** (Non-emergency calls only)  
Email: **community@pembina.com**

[www.pembina.com/safetyaroundpipelines](http://www.pembina.com/safetyaroundpipelines)

Pembina's head office:

### Pembina Pipeline Corporation

4000, 585 - 8 Avenue S.W.  
Calgary, Alberta, Canada T2P 1G1

Phone: **403-231-7500**  
Toll Free: **1-888-428-3222**