



PEMBINA PIPELINE CORPORATION

Building Something **Extraordinary**

Delivering integrated
infrastructure solutions
that connect global markets.

Pembina has grown from a single pipeline company in Alberta with 31 people, and an enterprise value of \$20 million into one of the largest midstream companies – nearly 2,600 people strong with an enterprise value of more than \$34 billion.

Our unwavering commitment to long-term value creation combined with solid core values and consideration of all stakeholders – will continue to propel us to new successes.


Our Purpose

To deliver integrated infrastructure solutions that connect global markets. We accomplish this by ensuring that:

-  **Customers** choose us first for reliable and value-added services;
-  **Investors** receive sustainable industry-leading total returns;
-  **Employees** see us as the ‘employer of choice’ and value our safe, respectful, collaborative and fair work culture; and
-  **Communities** welcome us and recognize the net positive impact of our social and environmental commitment.

Pipelines

Pembina safely operates over 18,000 kilometres of conventional, transmission and oil sands and heavy oil pipelines across North America.



Laid end-to-end, Pembina’s ~18,000 kilometres of pipelines could stretch across North America west to east three times.

Facilities

Pembina owns gas gathering and processing facilities. Additionally, we have natural gas liquids fractionation facilities, storage, and loading and off-loading service operations.

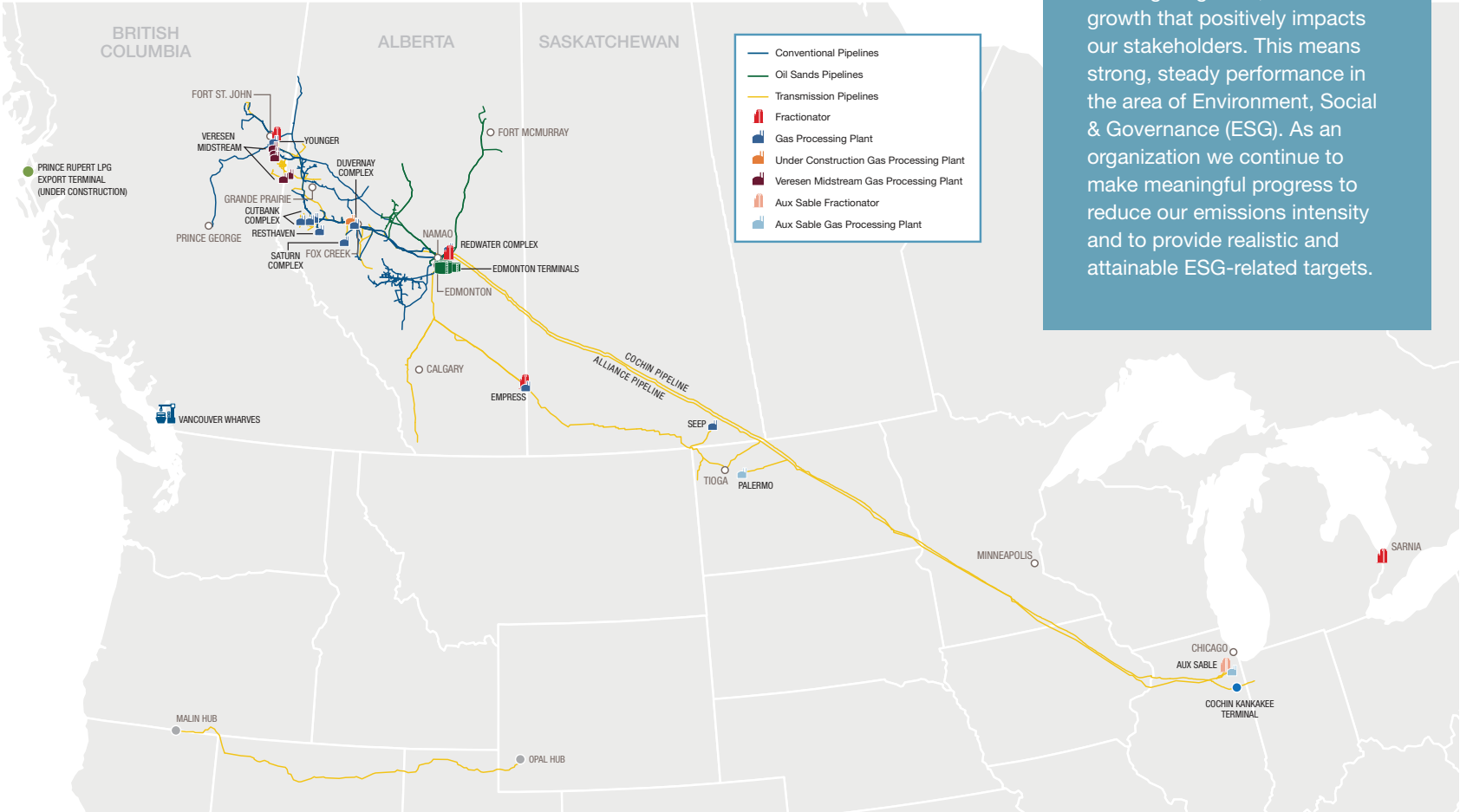


Each year our gas plants process enough gas to heat 11.7 million homes.

Marketing and New Ventures

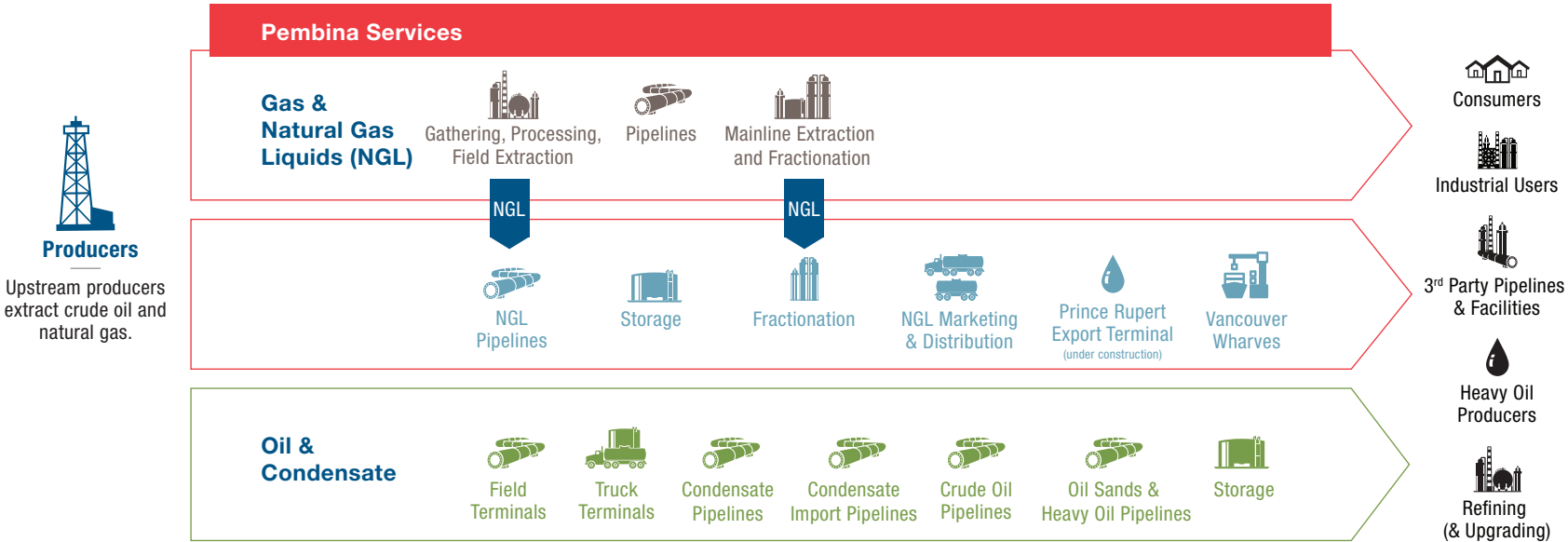
Pembina identifies opportunities to connect hydrocarbon production to locations that need it. Our aim is to ensure our customers’ hydrocarbons reach the highest value markets in the world.

Pembina is a leading North American energy infrastructure company



ESG
Pembina is committed to doing what we say we’ll do, which is creating long-term, sustainable growth that positively impacts our stakeholders. This means strong, steady performance in the area of Environment, Social & Governance (ESG). As an organization we continue to make meaningful progress to reduce our emissions intensity and to provide realistic and attainable ESG-related targets.

We provide safe and secure delivery of energy that powers our lives. Through our integrated infrastructure, we can provide multiple services to our customers across the energy value chain.



Our commitment to responsible development

Our network of pipelines and facilities connects us to the land and the communities where we operate. We hold ourselves to high standards of responsible development.

We focus our efforts on:

- maintaining the safety and integrity of our assets;

- mitigating potential impacts our operations could have on the surrounding environment;
- developing positive relationships with communities where we operate; and
- conducting business in a socially responsible manner.


Our focus

Safety and asset integrity

Working safely is a way of life at Pembina. Our success depends upon ensuring the safety of the public and our people throughout the communities where we operate. We believe all incidents can be prevented and we work hard – through 24/7/365 monitoring, the use of leading-edge technology, and comprehensive safety planning – to keep our systems and people as safe as possible.

Environmental stewardship

Throughout the planning, construction, and operation of our assets, we take actions that lessen the potential effects our operations could have on the surrounding environment.



Pembina's Carbon Stand
we are committed to reducing the greenhouse gas (GHG) emission intensity in each of our businesses.

Social well-being

Communities put their trust in Pembina, allowing us to operate in their backyards. We honour that trust by building, long-term relationships with communities and implementing mutual and net benefits. We work hard to understand

local perspectives and address potential social impacts of our operations. We proudly participate in local events, hire and utilize local businesses and people, and support the community through Pembina’s Community Investment Program.

Indigenous and Tribal communities

We realize the success of our business is directly tied to the support of our neighbours, many of whom are Indigenous or Tribal. We take the time to get to know the Indigenous or Tribal communities near our operations to learn and understand their perspectives. Meeting with Indigenous or Tribal groups is also an opportunity to explore how we can work together on health, education, training, employment and business development opportunities.

Pembina has implemented a workforce development program which aims to increase Indigenous and Tribal employment at Pembina and within the industry, supporting a more diverse workforce. Pembina helps build community capacity through training and employment related to our projects and our operations.

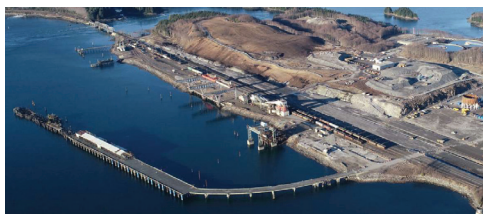


Pembina is proud to support Ducks Unlimited Canada’s Revolving Land Conservation Program. Our \$1 million commitment will help protect approximately 2,000 acres of important wetland habitat throughout Alberta and Saskatchewan.

Building Something Extraordinary

Building needed infrastructure

We believe in staged, carefully managed growth that respects the interests and concerns of our stakeholders and Indigenous and Tribal communities, while providing the energy services and infrastructure required for our growing economy. From the fuel used in vehicles to get from point A to B, to the cell phones and computers used to connect with people around the world, hydrocarbon products are an integral part of daily life. We are proud to transport energy that helps improve the quality of life for millions of people around the world.



Pembina's Prince Rupert Export Terminal Project, located in Prince Rupert, BC, with an in-service date of April 2021.

Building a dynamic team

Powering Pembina's growth are smart, creative and energetic people who allow us to remain a disciplined and responsible energy transportation and service provider and a trusted member of our communities. Our expectations are high, and so are our

rewards: We treat our people well - whether it's through our total compensation package, our community engagement and volunteer opportunities, or our numerous social activities. Find out how you might become part of the Pembina team at:

pembina.com/careers.



Pembina's Diversity & Inclusion Stand

we are committed to diversity, equal opportunity and ensuring that our employees have the ability to thrive in an inclusive environment.

Building extraordinary communities, together

From the coast of British Columbia to Lake Huron, Ontario, from Tioga to Channahon, Illinois, our pipelines, facilities, and people can be found across Canada and the United States. Pembina partners with non-profit and charitable organizations that support the communities where we operate. Within this framework, we focus our investments on organizations that improve access to education, protect or preserve the environment, promote safety, create community space and encourage wellness. To learn more about our Community Investment Program, visit our website at: pembina.com/communityinvestment.

Click or Call Before You Dig



Whether you're planning a home improvement job, planting a tree or installing a fence, Click Before You Dig to safely identify underground infrastructure. Visit clickbeforeyoudig.com to find your local damage prevention centre and details on how to request a land locate for your property.

Contact Information

Pembina Pipeline Corporation

Suite 4000, 585 – 8th Avenue S.W.

Calgary, Alberta T2P 1G1



1-888-920-1979 | community@pembina.com | www.pembina.com

